

INTRIX®

One Tap

Instant Boiling Water Tap



Read this user manual carefully before you use the appliance and save it for future reference.

Do not switch on power when the tank is empty.

Do not switch on power before and during flushing.

Flush the unit for 5min before switch on the power.

Never immerse the appliance in water or any other liquid, nor rinse it under the tap.

Boiling Water Tap User Manual

Please read this manual before use

ONE TAP 2-in-1

Model No. :
4002P21XX (Chrome)
4B02P23XX (Matte Black)



TABLE OF CONTENTS

INSTALLATION GUIDE	
Content of the Pack	Pg 1
Assemble Boiling Water Tap	Pg 1 - 3
How to Use	Pg 4

INSTALLATION GUIDE

Content of the Pack



A. Allen Key (M3)



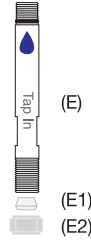
B. U-shaped Rubber Fixing Tap



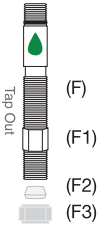
C. U-shaped Metal Fixing Tap



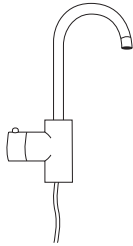
D. Metal and Rubber Washer (Separate package)



E. Tap-in Screw (BLUE) with Plastic Ring (E1) and Nut (E2)
E2 Wrench Size : 12mm



F. Tap-out Screw (GREEN) with Lock Nut (F1), Plastic Ring (F2) and Nut (F3)
F1 Wrench Size : 14mm
F3 Wrench Size : 12mm



G. Premium Duo 2-in-1 Boiling Water Tap with Silicone Tube

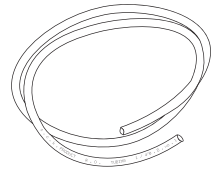
(H)



H. Triangle Support Ring



I. Spring



J. Plastic Tube

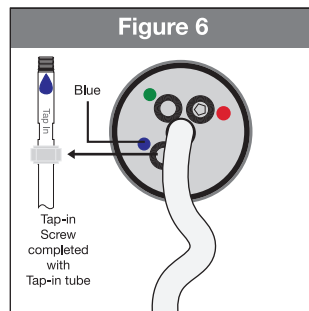
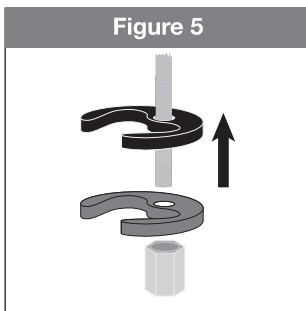
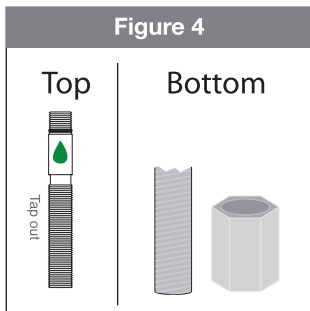
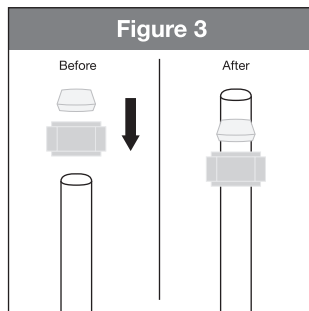
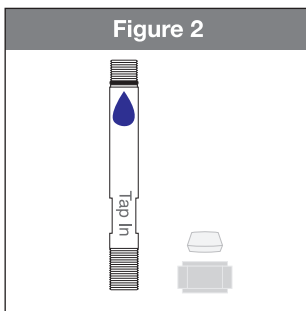
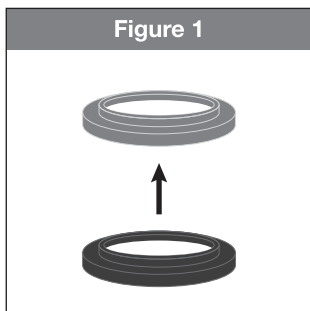


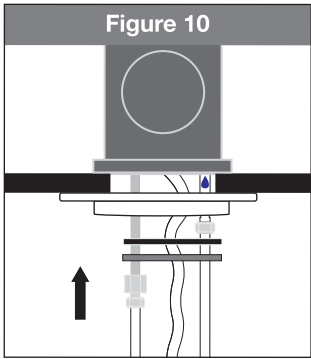
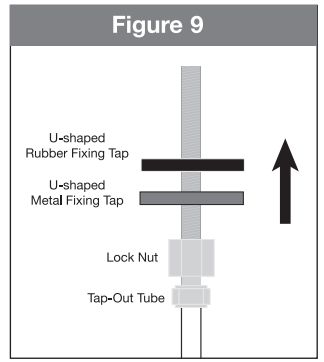
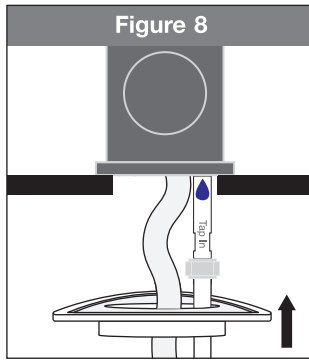
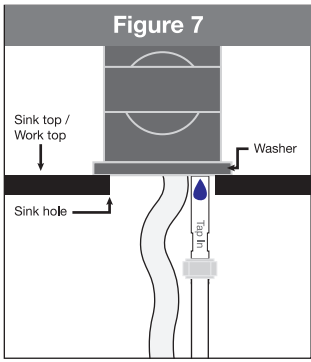
K. Tee-Fitting

Assemble the boiling water tap

1. Prepare the sink hole (Refer Boiling Unit User Manual, Pg 3).
2. Assemble the Metal and Rubber Washer (D) as shown in Figure 1.
3. Attached the whole set of washer to the sink hole.
4. Remove Plastic Ring (E1) and Nut (E2) from Tap-in Screw (E, with BLUE marking), as shown in Figure 2.
5. Prepare the tube for Tap-in Screw: Cut the plastic tube to the necessary length. Assemble the plastic ring (E1) and nut (E2) to the plastic tube as indicated in Figure 3.
6. Remove the Lock Nut (F1) from Tap-out Screw (F, with GREEN marking) as shown in Figure 4.

7. Attach the U-shaped Rubber Fixing Tap (B), then the U-shaped Metal Fixing Tap (C) to the Tap-out Screw (F) as shown in Figure 5. Screw the Lock Nut (F1) after fixing the U-shaped Metal Fixing Tap (C).
8. Prepare the tube for Tap-out Screw: Cut the plastic tube to the necessary length, Assemble the plastic ring (F2) and nut (F3) to the plastic tube as indicated in Figure 3.
9. Screw the completed connections in step 5 to the Tap-in Screw, then screw the Tap-in Screw completed with Tap-in Tube to the tap as shown in Figure 6.
10. Sit the whole unit of semi-assembled boiling water tap (G) with Tap-in Screw (F, connected with plastic tube) to the washer (D) and the sink hole (Maximum diameter 35mm) as shown in Figure 7.
11. Attach the Triangle Support Ring (H) to the boiling water tap unit as shown in Figure 8. It should sit below the sink top or work top.
12. Screw the completed connections in step 8 to the Tap-out Screw as shown in Figure 9.
13. Screw and tighten the Tap-out Screw completed with Tap-in Tube from step 8 to the tap as shown in Figure 10.
14. Adjust the position of the tap, tighten the Lock Nut to fix the position.
15. The boiling water tap is now ready for connection to the appliance.





HOW TO USE

The boiling water tap comes with 2 water outputs, namely:

- a) Filtered Ambient Water
- b) Filtered Boiling Water

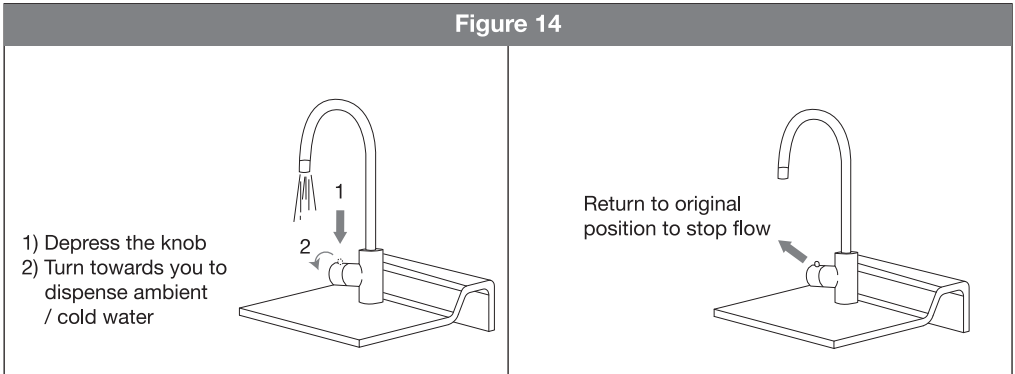
Filtered Ambient Water

At this setting, lightly warm water will be dispensed due to the heat transferred from the heater and this is normal.

Turn on the ambient water supply by depressing the knob and turn towards you. Water begins to flow from tap.

Return the lever to its' original position to stop the flow. Refer to Figure 14.

Figure 14



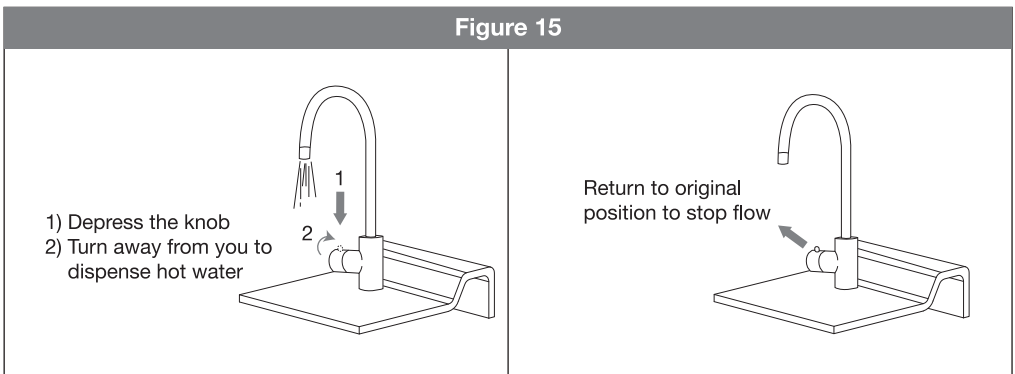
Filtered Boiling Water

At this setting, filter boiling water will be dispensed. As a safety measure, it comes with a Child-lock Control to prevent accidental burns.

Turn on the filter boiling water supply by depressing the knob, turn away from you and hold it. Filtered boiling water begins to flow from the tap.

Release the knob, it will return to its' original position to stop the flow. Refer to Figure 15.

Figure 15





www.IntrixLifestyle.com

INTRIX[®]

One Tap

Instant Boiling Water Tap

Unit 2, Teknologi Kubik, No.6, Jalan Teknologi 3/4, Taman Sains Selangor 1,
47810, Kota Damansara, Petaling Jaya, Selangor Darul Ehsan, Malaysia.

✆ 1700-81-6609 📞 1700-81-6608 ✉ hello@intrixgroup.com

🌐 www.IntrixLifestyle.com ⓘ Intrix